

Saline Newcomers

ISSUE 6

JANUARY 2010

Building "community" one friend at a time...

A Note From Our President, Brenda Terpstra

We had a terrific turnout and a GREAT time at the Annual Ornament Exchange. A big thank you to Melissa Solomon for hosting with such style and warmth in her lovely home! Now, we'll look forward to seeing many of you at the coffee in January. Remember that our purpose is to "be there" to welcome and get to know any first timers. Of course, there may be someone that you should be inviting or bringing to meet us, so think whether there is anyone you know who would benefit from knowing so many wonderful people. There's no excuse for anyone in Saline to be sad or lonely this winter. Just introduce them to Newcomers!

Now, as we begin a new year and a new decade, I'd like to wish you all enough...

I wish you enough sunshine to keep your attitude bright no matter how gray the day may appear.

I wish you enough rain to appreciate the sun even more.

I wish you enough happiness to keep your spirit alive and everlasting.

I wish you enough pain so that even the smallest of joys in life may appear bigger.

I wish you enough gain to satisfy your wanting.

I wish you enough loss to appreciate all that you possess.

I wish you enough hellos to get you through the final goodbye.

Happy New Year Everyone!



Inside this issue:

President's Note	2
SIG Chairs	2
Holiday Party Photos	3
Special Interest Groups	4
Calendar	5
Board Members	6
Community Service	6



Angel Network

Newcomers, if you know of a member experiencing an illness, a birth, or the death of a family member, please send an email to **both**

Liz Kostora at arnienliz@comcast.net & Brenda Terpstra at bterpstra@comcast.net.

Thank you!

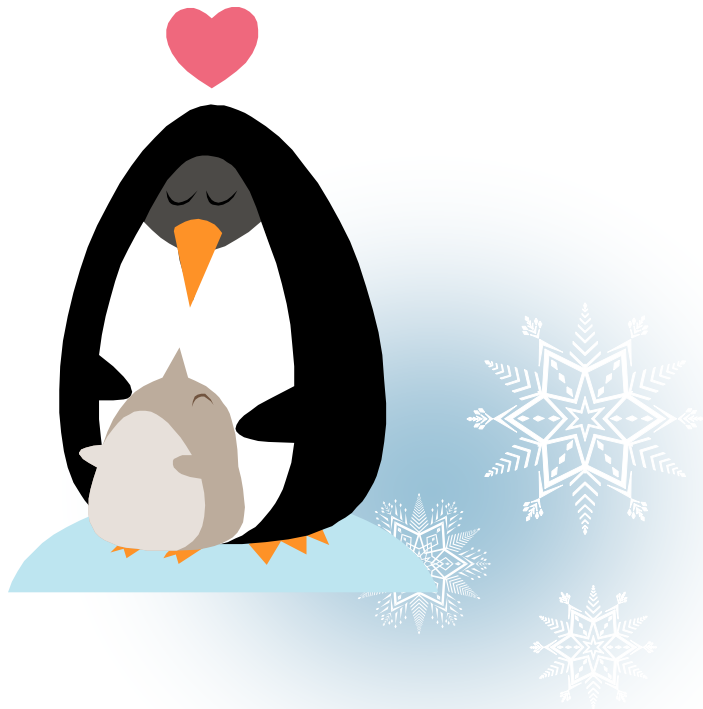


Board Meeting

January 11th

7 pm

Brenda's home



Welcome Wagon Service



If you are new to Saline (within the past year) or

know someone who is, please enjoy the services of the Welcome Wagon. (Pass it on!) Contact Sue Corcoran at 734-944-4799 for your Welcome Package of coupons and information about businesses in the Saline Area and things to do.

Special Interest Group Chairs

Barbie Bunco:	Gina Harrison 429-0409
Book Club:	Liz Hartley 944-5360
Bunco Babes:	Sue Wodkowski 944-2428
Bunco Belles:	Mary Jo Schulte 944-1076
Card Club:	Sue Wodkowski 944-2428
Chick Flicks:	Susan Philp 476-9545
Euchre I:	Sue Wodkowski 944-2428
Euchre II:	Mary Norton & Brenda Lorey 260-4947
Day Trippers:	Susan Lenz 369-6166 & Mary Lou Feight 429-8337
Dinner Group:	Elizabeth Jarzembowski 662-5088
Friday Cocktails:	Amanda Mepham 316-2483 & Elizabeth Devitt 804-527-2233
Lunch Bunch:	Cheri Scrivan 470-6109 & Jayne Haynes 929-5663
Men's Poker:	Ben Schafer 429-3919
Playgroup:	Rebecca Meyers 526-9472 & Amanda Mepham 316-2483
Walking Club:	Deanna Richter 944-2609
Worker Bees:	Michelle Warwrzynski 944-9040

 An advertisement for Mary Kay cosmetics. It features a collection of various cosmetic products like tubes and bottles. The text reads:

Sarah A. Gray
Independent Sales Director

7000 Wapiti Way
Saline, MI 48176
734-476-2410

sgray4@marykay.com
www.marykay.com/sgray4

 An advertisement for memories.com. It includes a photo of Lisa Rentschler and the following text:

memories

Lisa Rentschler
SENIOR CONSULTANT
425 Cottonwood Lane
Saline, MI 48176
Cell: (734) 476-6073
Home: (734) 944-0307
RENTSCHLERCOM@COMCAST.NET • www.mysite.com/LisaRentschler

your life | your story | your way

 An advertisement for Discovery Toys. It features the company logo and contact information for Nancy Meyers:

DISCOVERY TOYS
The Premier Educational Toy Company

Nancy Meyers
Educational Consultant & Saline Newcomer
2435 Nottingham Road
Ann Arbor, MI 48104
(734) 677-7763

nmeyers@comcast.net



**Saline
Newcomers
Annual
Holiday
Party &
Ornament
Exchange
2009**



Book Club

Read *The Guernsey and Potato Peel Society* by Mary Ann Shaffer & Annie Barrows; then join us on January 19 for a lively book discussion to chase away those winter blues. We'll meet at Border's Cafe, Lohr Rd., 7pm in the usual spot.

Get a jump start on February's book club pick, the play: *Uncommon Women and Others*, by Wendy Wasserstein. Note: this may need to be ordered from a local book store or Amazon, so please allow sufficient time for delivery. Join us on February 16, 7:00 at Liz Hartley's home to discuss and watch the play on DVD. Details will follow in the February newsletter.

Any questions, call Liz @ 944-5360.

Newcomers Worker Bees

A Volunteer Group, new this year!

If interested, contact Michelle Warwzynski at sheld8@aol.com or 944-9040.

Night Trippers

Join us for an evening of laughter at the Ann Arbor Comedy Showcase on January 23 at 8:00 p.m. We have a 2 for 1 deal, so the price is only \$10 per couple, or \$5 per person. Have your money and reservation to Judy Neeb by Monday, January 18. The comic will be Jack Mayberry, known as a small town comic with a worldwide perspective. From the website: "His easy-going comedy ranges from the imaginatively silly to the 'serious' stuff ripped from the latest headlines. Most memorable are the **Ross Perot impersonations** that made him famous, (He looks like Perot!) but he's been on every cable comedy show on TV including **SHOWTIME, Comedy Central, NBC, and FOX TV**, as well as over 25 appearances on **'The Tonight Show.'**

For additional information, call or email Judy at 944-3733 or jneeb55@comcast.net.

Barbie Bunco

Will be meeting at Lisa Rentschler's "winter home" on Tuesday, January 12, at 7pm. The address is 5338 Village Road, in the Travis Pointe subdivision. Remember to enter off of Ann Arbor-Saline Road.

Contact Gina Harrison at 429-0409

Euchre I

Couples I Euchre will be playing on Saturday, Jan. 16, at John and Nancy Greko's.

Contact Sue Wodkowski at sueinsaline@msn.com or 944-2428.

Card Club

Morning Cards in January will be hosted by Amy Jennings and co-hosted by Janet Moss. We will be meeting on Friday, January 15 from 10 AM - Noon. If you are interested in joining the morning card group please contact Sue Wodkowski at sueinsaline@msn.com or 944-2428. Amy's address is 2811 Wildwood Trail.

Bunco Babes

Bunco Babes meets Wednesday, Jan. 6, at Lynn Lemley's.

If you need the sub list, contact Sue Wodkowski at sueinsaline@msn.com or 944-2428.

Welcome Coffees

January Welcome Coffee will be hosted by Donna Pepper, date to be determined.

For more information, contact Susan Henderson 998-0473.

Lunch Bunch

Attention all Lunch Bunch gals—save the date (& the New Years calories)

The January lunch bunch outing will be Friday, January 8 at 12:00 noon at Carson's American Bistro, located at 2000 Commonwealth Blvd near Plymouth Road. Please RSVP to Cheri Scriven at CheriScriven@yahoo.com or 734 470-6109 by Thursday, January 7.

Bunco Belles

The Bunco Belles will be meeting the second Thursday of the month at Catherine Soehner's home on January 14th at 7PM Please let Catherine and Tony know if you are not able to make it and who will be subbing for you. Any questions, please feel free to call Mary Jo Schulte at 944-1076. Thanks everyone.

Friday Cocktails

Contact Amanda Mepham at 316-2483 or Elizabeth Devitt 804-527-2233

PLAYGROUP

To join the Thursday Playgroup, Contact Amanda Mepham at 316-2483.

To join the Friday Playgroup, Contact Becky Meyers at 526-9472.

Chick Flicks

Please join us for our next movie event:

January 26th, early show,
Quality 16 Theater in Ann Arbor
Movie to be announced

Contact Susan Philp at 476-9545

Men's Poker

January 8th at Tony & Catherine's house,
RSVP directly to Tony & Catherine

Contact Ben Schafer 734 645 6800

Walking Group

Walk M-F 9:30am-11am @ Liberty school gym. Park in the front of the school, use the glass doors to enter and the gym is on the right hand side. No walking on 1/18, and 1/26 the gym is closed, but we can walk in the halls.

Any questions? Deanna Richter 944-2609
cell:734-347-2693 dlr714100@comcast.net

January 2010

SUN	MON	TUE	WED	THU	FRI	SAT
					1	2
3	4 Walking Group	5 Walking Group	6 Walking Group Bunco Babes	7 Walking Group PLAYGROUP	8 Walking Group PLAYGROUP Lunch Bunch Men's Poker	9
10	11 Walking Group Board Meeting	12 Walking Group Barbie Bunco	13 Walking Group	14 Walking Group PLAYGROUP Bunco Belles	15 Walking Group PLAYGROUP Card Club	16 Euchre I
17	18	19 Walking Group Book Club	20 Walking Group	21 Walking Group PLAYGROUP	22 Walking Group PLAYGROUP	23 Night Trippers
24	25 Walking Group	26 Walking Group (not in gym) Chick Flicks	27 Walking Group	28 Walking Group PLAYGROUP	29 Walking Group PLAYGROUP	30
31						

Saline Newcomers
P. O. Box 696

Saline,
MI
48176



Visit us at
www.SalineNewcomers.com

Community Service

Please bring donations for Saline Social Services to the Welcome Coffee this month. Any paper products are needed including toilet paper, paper towels, napkins, kleenex, diapers and feminine hygiene products. Let's be generous to those neighbors who really need a hand in these tough economic times.

Saline Newcomers also deliver Meals on Wheels to Saline area residents on the 3rd, 4th, and 5th Thursdays of each month. If you have some free time and are available around lunchtime on any of these days, you could receive free training to be a driver. Meals on Wheels is a much needed service in the community and I would love to hear from you if you have an interest in making a difference.

Thanks,
Ginny Lilja 944-3230



Welcome Coffee

Know someone who might be interested in joining Saline Newcomers? Bring them to the Welcome Coffee hosted by Donna Pepper this month.



Board Members

President:	Brenda Terpstra 944-5486
VP Programs:	Deanna Richter 944-2609
VP Membership:	Melissa Solomon 439-1744
Secretary:	Liz Kostora 429-4931
Treasurer:	Mary Jo Schulte 944-1046
Newsletter Editor:	Rebecca Random 709-2445
Historian/Publicity:	Susan Lenz 369-6166
Special Interest Coordinator:	Cheryl Girvan 944-7120

Standing Committee Chairs

Angel Network:	Liz Kostora 429-4931
Communications/E-mail:	Lisa Rentschler 944-0307
Website:	Nancy Grecko 323-0653
Community Service:	Ginny Lilja 944-3230
Newcomer Welcome Service:	Sue Corcoran 944-4799
Welcome Coffees:	Susan Henderson 998-0473